



# **KINEPOLIS**

## CORPORATE IDENTITY GUIDELINES

Restyling of the Kinopolis Classic Logo  
& Corporate Identity.

Evolution, not a revolution.

The background is a gradient of blue, transitioning from a darker shade on the left to a lighter shade on the right. On the left side, there is a vertical strip of film with several square frames. Overlaid on this is a large, semi-transparent blue star shape. The text "1. Logo" is centered within the star.

# 1. Logo

## RESTYLING OF THE CLASSIC KINEPOLIS LOGO

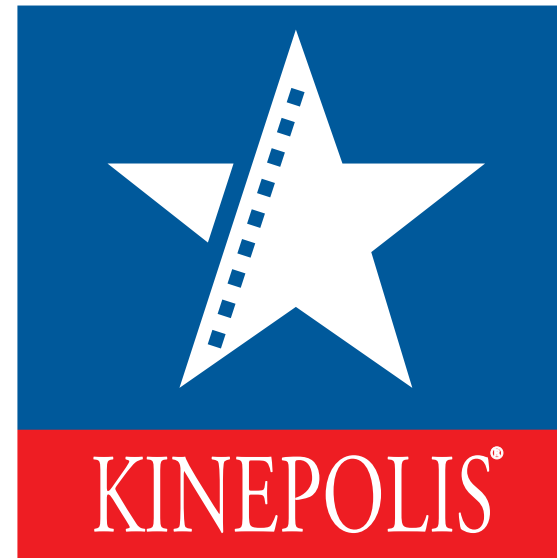
'Flat' classic logo evolved into a more 3D orientated logo.

Gray gradient border with rounded corners, blue gradient backdrop & rays of light.

Metallic star, filmstrip reduced to 6 cut outs (9).

New typography ITC Kabel Demi Caps) on a red gradient backdrop.

Dropshadow is optional but enhances visibility on background with light colours.



VARIATIONS

1.1 CMYK

Full version, dropshadow is optional but enhances visibility on backgrounds with light colours.

Application: full colour print & web



Blue gradient linear (angle 42%)

C100 M56 Y0 K59 (Loc. 100%)  
C100 M56 Y0 K44 (Loc. 72.68%)  
C80 M5 Y10 K0 (Loc. 0%)



Red gradient radial (angle 42%)

C15 M100 Y90 K10 (Loc. 100%)  
C0 M100 Y100 K0 (Loc. 74.32%)  
C0 M35 Y85 K0 (Loc. 33.88%)



C100 M56 Y0 K59



C80 M5 Y10 K0



C0 M100 Y100 K0



C0 M35 Y85 K0

VARIATIONS

1.3 GRAYSCALE

Dropshadow is optional but enhances visibility on backgrounds with light colours.

Application: full colour & grayscale print & web



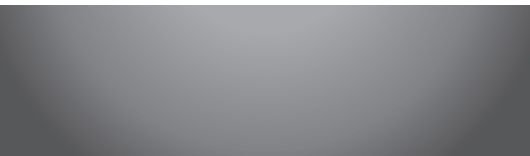
Gray gradient linear (angle 42%)

C0 M0 Y0 K100 (Loc. 100%)  
C0 M0 Y0 K90 (Loc. 72.68%)  
C0 M0 Y0 K30 (Loc. 0%)



Gray gradient radial (angle 42%)

C0 M0 Y0 K80 (Loc. 100%)  
C0 M0 Y0 K60 (Loc. 74.32%)  
C0 M0 Y0 K40 (Loc. 33.88%)



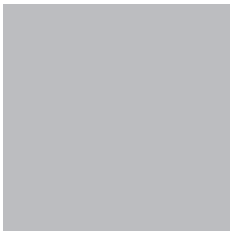
C0 M0 Y0 K100



C0 M0 Y0 K90



C0 M0 Y0 K60



C0 M0 Y0 K30

VARIATIONS

1.3 CMYK

Simplified version, no rays, no reflection in white star.  
Dropshadow is optional but enhances visibility on backgrounds with light colours.

Application: full colour print & web



Blue gradient linear (angle 42%)

C100 M56 Y0 K59 (Loc. 100%)  
C100 M56 Y0 K44 (Loc. 72.68%)  
C80 M5 Y10 K0 (Loc. 0%)

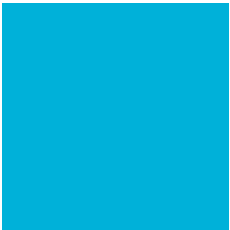


Red gradient radial (angle 42%)

C15 M100 Y90 K10 (Loc. 100%)  
C0 M100 Y100 K0 (Loc. 74.32%)  
C0 M35 Y85 K0 (Loc. 33.88%)



C100 M56 Y0 K59



C80 M5 Y10 K0



C0 M100 Y100 K0



C0 M35 Y85 K0

## VARIATIONS

### 1.4 PANTONE MATCHING SYSTEM

Full version, dropshadow is optional but enhances visibility on backgrounds with light colours.

Application: two colour print



#### Blue gradient linear (angle 42%)

Pantone 655 u (Opac 100% - Loc. 100%)

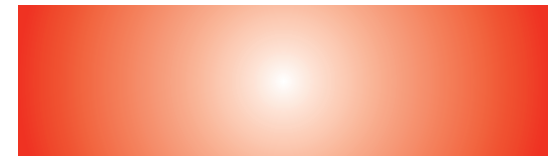
Pantone 655 u (Opac 27% - Loc. 0%)



#### Red gradient radial (angle 42%)

Pantone 1795 u (Opac 100% - Loc. 100%)

White (Opac 0% - Loc. 0%)



PANTONE 655 U



PANTONE 1795 U

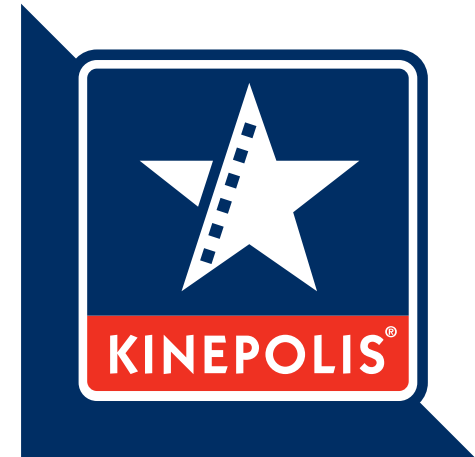


## VARIATIONS

### 1.5 PANTONE MATCHING SYSTEM

Simplified version, no rays, no reflection in white star.

Application: 2 colour print



PANTONE 655 U



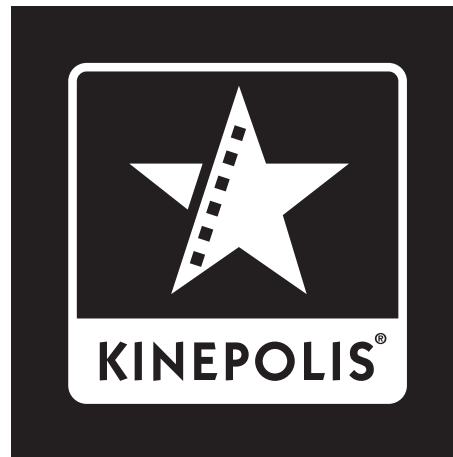
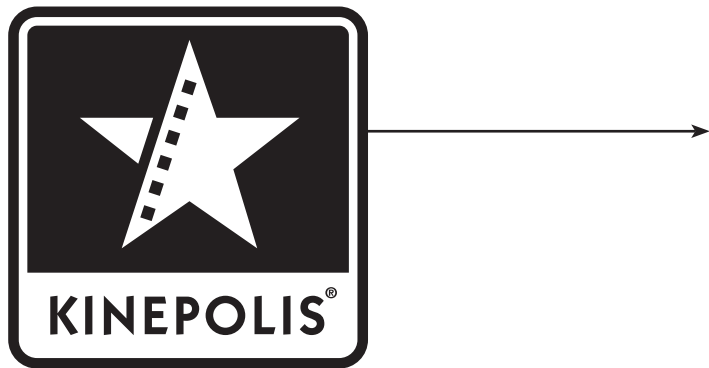
PANTONE 1795 U

## VARIATIONS

### 1.6 BLACK & WHITE

Simplified version, no rays, no reflection in white star.

Application: 1 colour print



The background is a gradient of blue, transitioning from a darker shade on the left to a lighter shade on the right. On the left side, there is a graphic of a film strip with several square frames. The text "2. Typography" is centered in the middle of the image in a white, sans-serif font.

## 2. Typography



LOGOTYPE

Itc Kabel Demi Caps tracking 100pt

KINEPOLIS®

KINEPOLIS®

KINEPOLIS®

ITC Kabel

Consectetur adipiscing elit. Suspendisse nec nisl vel neque commodo porttitor. Nunc orci massa, ullamcorper ac venenatis ut, posuere quis eros. Nulla eget orci at diam posuere lacinia. Nullam gravida libero vel lorem volutpat non tristique mi semper. Nulla consequat nisi et ipsum suscipit in egestas justo ullamcorper. Vestibulum lectus mi, blandit sed faucibus ac, tempor in nunc. Fusce sed risus in nunc iaculis varius.

Book

ABCDEFGHIJKLMNOPQRSTUVWXYZ  
abcdefghijklmnopqrstuvwxyz  
1234657980/\*-+.%&é”(\$è!çà)-

Medium

ABCDEFGHIJKLMNOPQRSTUVWXYZ  
abcdefghijklmnopqrstuvwxyz  
1234657980/\*-+.%&é”(\$è!çà)-

Extra Bold

ABCDEFGHIJKLMNOPQRSTUVWXYZ  
abcdefghijklmnopqrstuvwxyz  
1234657980/\*-+.%&é”(\$è!çà)-

Bold

ABCDEFGHIJKLMNOPQRSTUVWXYZ  
abcdefghijklmnopqrstuvwxyz  
1234657980/\*-+.%&é”(\$è!çà)-

## PRINT APPLICATION

### 1.1 GENERAL COMMUNICATION B2C

Headline, baseline, bodycopy & footer.

#### Proxima Nova

## Consectetur adipiscing elit.

Suspendisse nec nisl vel neque commodo porttitor. Nunc orci massa, ullamcorper ac venenatis ut, posuere quis eros. Nulla eget orci at diam posuere lacinia. Nullam gravida libero vel lorem volutpat non tristique mi semper. Nulla consequat nisi et ipsum suscipit in egestas justo ullamcorper. Vestibulum lectus mi, blandit sed faucibus ac, tempor in nunc. Fusce sed risus in nunc iaculis varius.

#### Regular

ABCDEFGHIJKLMNOPQRSTUVWXYZ

abcdefghijklmnopqrstuvwxyz

1234657980/\*-+.²&é”(§è!çà)-

#### Semibold

ABCDEFGHIJKLMNOPQRSTUVWXYZ

abcdefghijklmnopqrstuvwxyz

1234657980/\*-+.²&é”(§è!çà)-

#### Bold

ABCDEFGHIJKLMNOPQRSTUVWXYZ

abcdefghijklmnopqrstuvwxyz

1234657980/\*-+.²&é”(§è!çà)-

#### Extra Bold

ABCDEFGHIJKLMNOPQRSTUVWXYZ

abcdefghijklmnopqrstuvwxyz

1234657980/\*-+.²&é”(§è!çà)-

#### Minion Pro

## Consectetur adipiscing elit.

Suspendisse nec nisl vel neque commodo porttitor. Nunc orci massa, ullamcorper ac venenatis ut, posuere quis eros. Nulla eget orci at diam posuere lacinia. Nullam gravida libero vel lorem volutpat non tristique mi semper. Nulla consequat nisi et ipsum suscipit in egestas justo ullamcorper. Vestibulum lectus mi, blandit sed faucibus ac, tempor in nunc. Fusce sed risus in nunc iaculis varius.

#### Regular

ABCDEFGHIJKLMNOPQRSTUVWXYZ

abcdefghijklmnopqrstuvwxyz

1234657980/\*-+.²&é”(§è!çà)-

#### Italic

ABCDEFGHIJKLMNOPQRSTUVWXYZ

abcdefghijklmnopqrstuvwxyz

1234657980/\*-+.²&é”(§è!çà)-

#### Bold

ABCDEFGHIJKLMNOPQRSTUVWXYZ

abcdefghijklmnopqrstuvwxyz

1234657980/\*-+.²&é”(§è!çà)-

#### Bold Italic

ABCDEFGHIJKLMNOPQRSTUVWXYZ

abcdefghijklmnopqrstuvwxyz

1234657980/\*-+.²&é”(§è!çà)-

## PRINT APPLICATION

## 1.2 STATIONARY

Heading, bodycopy & footer in corporate Word templates

## Itc Kabel

## Consectetur adipiscing elit.

Suspendisse nec nisl vel neque commodo porttitor. Nunc orci massa, ullamcorper ac venenatis ut, posuere quis eros. Nulla eget orci at diam posuere lacinia. Nullam gravida libero vel lorem volutpat non tristique mi semper. Nulla consequat nisi et ipsum suscipit in egestas justo ullamcorper. Vestibulum lectus mi, blandit sed faucibus ac, tempor in nunc. Fusce sed risus in nunc iaculis varius.

## Regular

ABCDEFGHIJKLMNOPQRSTUVWXYZ  
abcdefghijklmnopqrstuvwxyz  
1234657980/\*-+.²&é'''(§è!çà)-

## Italic

ABCDEFGHIJKLMNOPQRSTUVWXYZ  
abcdefghijklmnopqrstuvwxyz  
1234657980/\*-+.²&é'''(§è!çà)-

## Demi

ABCDEFGHIJKLMNOPQRSTUVWXYZ  
abcdefghijklmnopqrstuvwxyz  
1234657980/\*-+.²&é'''(§è!çà)-

## Bold

ABCDEFGHIJKLMNOPQRSTUVWXYZ  
abcdefghijklmnopqrstuvwxyz  
1234657980/\*-+.²&é'''(§è!çà)-

## Ultra

ABCDEFGHIJKLMNOPQRSTUVWXYZ  
abcdefghijklmnopqrstuvwxyz  
1234657980/\*-+.²&é'''(§è!çà)-

## Trebuchet MS

## Consectetur adipiscing elit.

Suspendisse nec nisl vel neque commodo porttitor. Nunc orci massa, ullamcorper ac venenatis ut, posuere quis eros. Nulla eget orci at diam posuere lacinia. Nullam gravida libero vel lorem volutpat non tristique mi semper. Nulla consequat nisi et ipsum suscipit in egestas justo ullamcorper. Vestibulum lectus mi, blandit sed faucibus ac, tempor in nunc. Fusce sed risus in nunc iaculis varius.

## Regular

ABCDEFGHIJKLMNOPQRSTUVWXYZ  
abcdefghijklmnopqrstuvwxyz  
1234657980/\*-+.²&é'''(§è!çà)-

## Italic

ABCDEFGHIJKLMNOPQRSTUVWXYZ  
abcdefghijklmnopqrstuvwxyz  
1234657980/\*-+.²&é'''(§è!çà)-

## Bold

ABCDEFGHIJKLMNOPQRSTUVWXYZ  
abcdefghijklmnopqrstuvwxyz  
1234657980/\*-+.²&é'''(§è!çà)-

## Bold Italic

ABCDEFGHIJKLMNOPQRSTUVWXYZ  
abcdefghijklmnopqrstuvwxyz  
1234657980/\*-+.²&é'''(§è!çà)-

## DIGITAL

## 1.3 E-MAIL SIGNATURE / ONLINE / POWERPOINT

Heading, bodycopy &amp; footer

## Trebuchet MS

## Consectetur adipiscing elit.

Suspendisse nec nisl vel neque commodo porttitor. Nunc orci massa, ullamcorper ac venenatis ut, posuere quis eros. Nulla eget orci at diam posuere lacinia. Nullam gravida libero vel lorem volutpat non tristique mi semper. Nulla consequat nisi et ipsum suscipit in egestas justo ullamcorper. Vestibulum lectus mi, blandit sed faucibus ac, tempor in nunc. Fusce sed risus in nunc iaculis varius.

## Regular

ABCDEFGHIJKLMNOPQRSTUVWXYZ  
abcdefghijklmnopqrstuvwxyz  
1234567980/\*-+.²&é'''(§è!çà)-

## Italic

ABCDEFGHIJKLMNOPQRSTUVWXYZ  
abcdefghijklmnopqrstuvwxyz  
1234567980/\*-+.²&é'''(§è!çà)-

## Bold

ABCDEFGHIJKLMNOPQRSTUVWXYZ  
abcdefghijklmnopqrstuvwxyz  
1234567980/\*-+.²&é'''(§è!çà)-

## Bold Italic

ABCDEFGHIJKLMNOPQRSTUVWXYZ  
abcdefghijklmnopqrstuvwxyz  
1234567980/\*-+.²&é'''(§è!çà)-

## Arial

## Consectetur adipiscing elit.

Suspendisse nec nisl vel neque commodo porttitor. Nunc orci massa, ullamcorper ac venenatis ut, posuere quis eros. Nulla eget orci at diam posuere lacinia. Nullam gravida libero vel lorem volutpat non tristique mi semper. Nulla consequat nisi et ipsum suscipit in egestas justo ullamcorper. Vestibulum lectus mi, blandit sed faucibus ac, tempor in nunc. Fusce sed risus in nunc iaculis varius.

## Regular

ABCDEFGHIJKLMNOPQRSTUVWXYZ  
abcdefghijklmnopqrstuvwxyz  
1234567980/\*-+.²&é'''(§è!çà)-

## Italic

ABCDEFGHIJKLMNOPQRSTUVWXYZ  
abcdefghijklmnopqrstuvwxyz  
1234567980/\*-+.²&é'''(§è!çà)-

## Bold

ABCDEFGHIJKLMNOPQRSTUVWXYZ  
abcdefghijklmnopqrstuvwxyz  
1234567980/\*-+.²&é'''(§è!çà)-

## Bold Italic

ABCDEFGHIJKLMNOPQRSTUVWXYZ  
abcdefghijklmnopqrstuvwxyz  
1234567980/\*-+.²&é'''(§è!çà)-

## NAME STAR

### 1.1 COMBINATION LOGO + TYPEFACE



KINEPOLIS ANTWERPEN



KINEPOLIS



KINEPOLIS



KINEPOLIS



KINEPOLIS



## NAME STAR

### 1.2 COMBINATION LOGO + TYPEFACE

KINEPOLIS ANTWERPEN

ITC Kabel Medium (tracking 50)



KINEPOLIS



KINEPOLIS



The background is a gradient of blue, transitioning from a darker shade on the left to a lighter shade on the right. On the left side, there is a vertical strip of darker blue containing a series of small, dark blue squares arranged in a slightly curved, descending line, resembling a film strip. The main title is centered in the middle of the image.

# 3. Colours

BASIC COLOURS

1.1 CMYK

Application: full colour print



C100 M56 Y0 K59



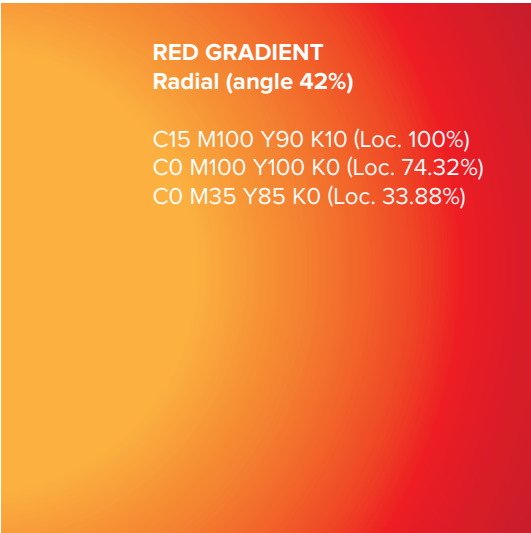
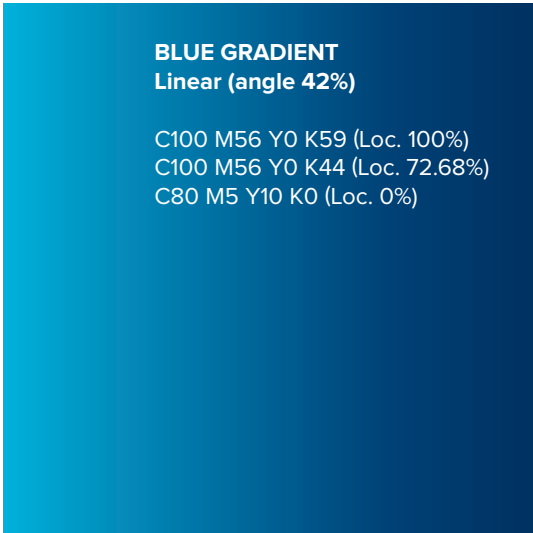
C80 M5 Y10 K0



C0 M100 Y100 K0



C0 M35 Y85 K0



BASIC COLOURS

1.2 PANTONE MATCHING SYSTEM

Application: 1 or 2 colour print



PANTONE 655 U



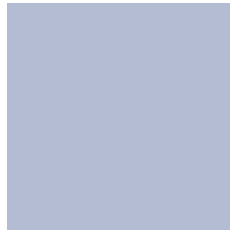
PANTONE 1795 U



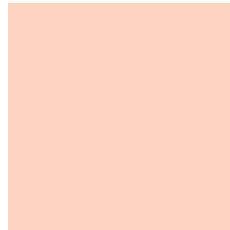
PANTONE 655 U  
50%



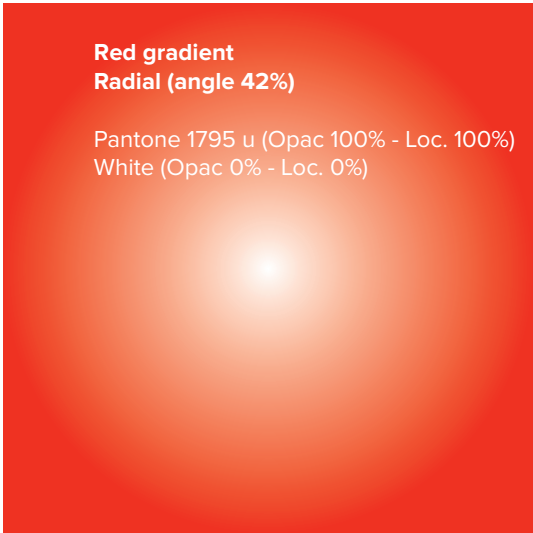
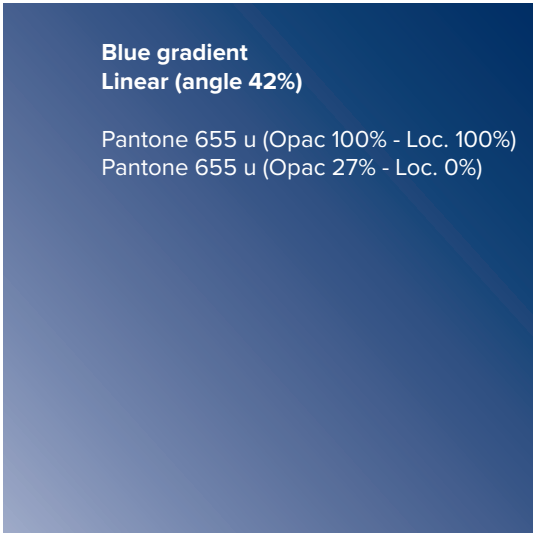
PANTONE 1795 U  
50%



PANTONE 655 U  
20%



PANTONE 1795 U  
20%



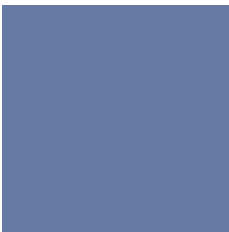
SECONDARY COLOURS

1.3 CMYK

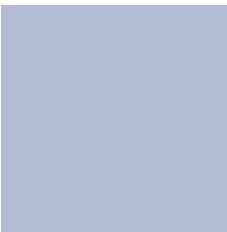
Application: full colour print in addition to the corporate colours



C100 M68 Y0 K52



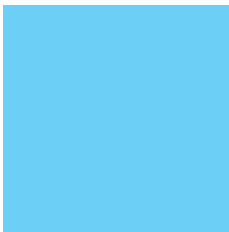
C100 M68 Y0 K52  
50%



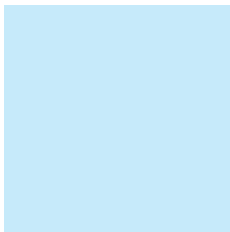
C100 M68 Y0 K52  
20%



C100 M10 Y10 K0



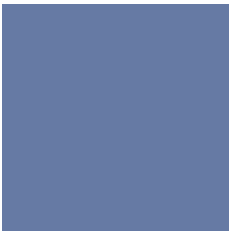
C50 M0 Y0 K0



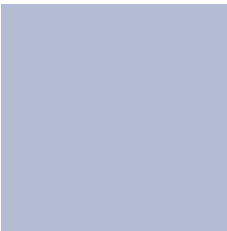
C20 M0 Y0 K0



C100 M68 Y0 K52



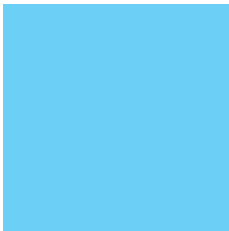
C100 M68 Y0 K52  
50%



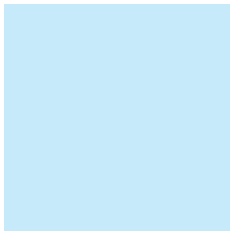
C100 M68 Y0 K52  
20%



C100 M10 Y10 K0



C50 M0 Y0 K0



C20 M0 Y0 K0

The background is a gradient of blue, transitioning from a darker shade on the left to a lighter shade on the right. On the left side, there is a graphic element resembling a film strip, consisting of a series of dark blue squares arranged in a slightly curved, descending line. The overall design is modern and minimalist.

## 4. Graphic elements

The background is a gradient of blue, transitioning from a darker shade on the left to a lighter shade on the right. On the left side, there is a graphic of a film strip with several rectangular frames. The text "6. Word templates" is centered in the middle of the slide in a white, sans-serif font.

## 6. Word templates

**A. Algemene briefwisseling.**

Elk departement heeft een gepersonaliseerde template.  
Voor bepaalde departementen is er ook per taal een template voorzien (vb. Brussel/Bruxelles,...)

> Marges van de bodycopy zijn verstelbaar.

Opgelet! marge en positie van het adresveld mag niet worden gewijzigd of verplaatst, de positie van dit veld is ingesteld voor briefwisseling met vensterenveloppes.

> Vervolgpagina's beschikbaar (met header + footer)

> Afprintbaar op voorgedrukt briefpapier (zie **C.** printerinstellingen).

**B. Meeting Notes**

Er is 1 algemene template voor verslagen e.a.

**BELANGRIJK!**

deze lettertypes installeren/kopiëren op de PC.

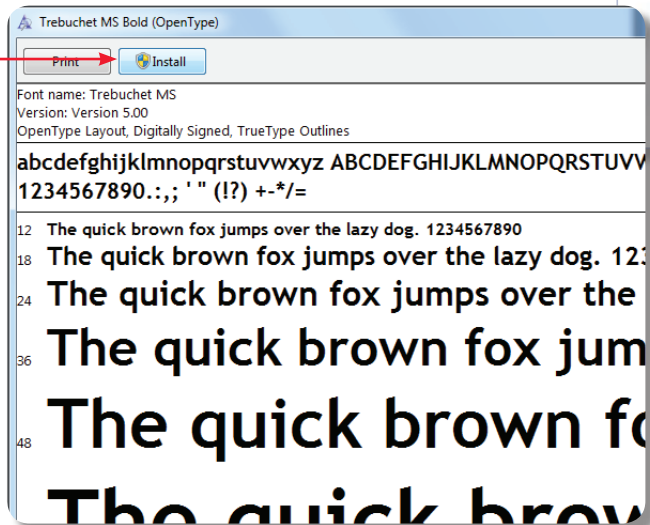
> **ITC Kabel** (hoofding)

> **Trebuchet** (bodycopy + adresgegevens)

lettertype installeren: icoon dubbelklikken + install of

lettertype kopiëren in lettertypescatalogus

**Control Panel\Appearance and Personalization\Fonts**

**Algemene briefwisseling**
**Meeting notes**



### C. Printen op officieel briefpapier

Om te vermijden dat de hoofding (rode balk + logo) van de WORD-template wordt afgeprint op officieel briefpapier is het aangewezen om bij de **Printing options** het item **Print drawings created in Word** af te vinken.

